

222 Easton Ave

NEW BRUNSWICK, NJ 08901

AVAILABLE FOR LEASE

NEXT TO ST. PETERS HOSPITAL

UNIT A

1,750 SF OFFICE

6 PRIVATES

RECEPTION/WAITING & FILE ROOM

\$3,800/Month + Utilities

UNIT B

1,750 SF OFFICE (DENTAL)

ELECTRIC IN EXAM ROOMS FOR DENTAL

6 EXAM ROOMS

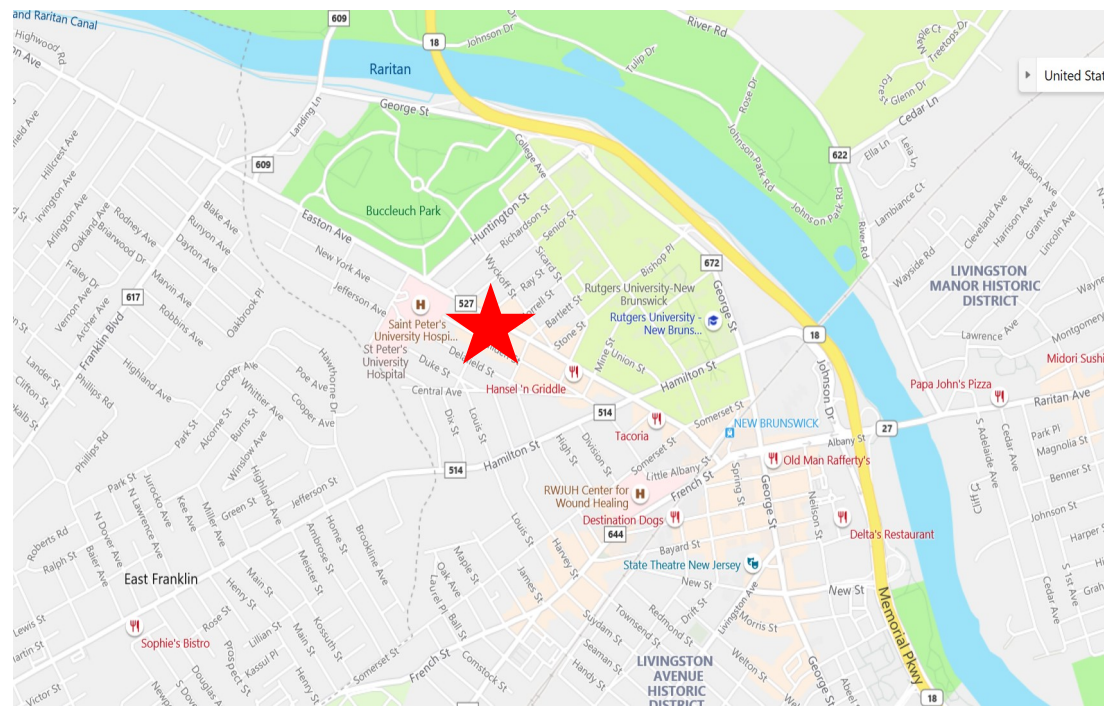
RECEPTION/WAITING & FILE ROOM

\$3,800/Month + Utilities

THESE TWO UNITS CAN BE LEASED

AS ONE 3,500 SF UNIT

Lance Bram
COMMERCIAL BROKERAGE
www.lancebram.com

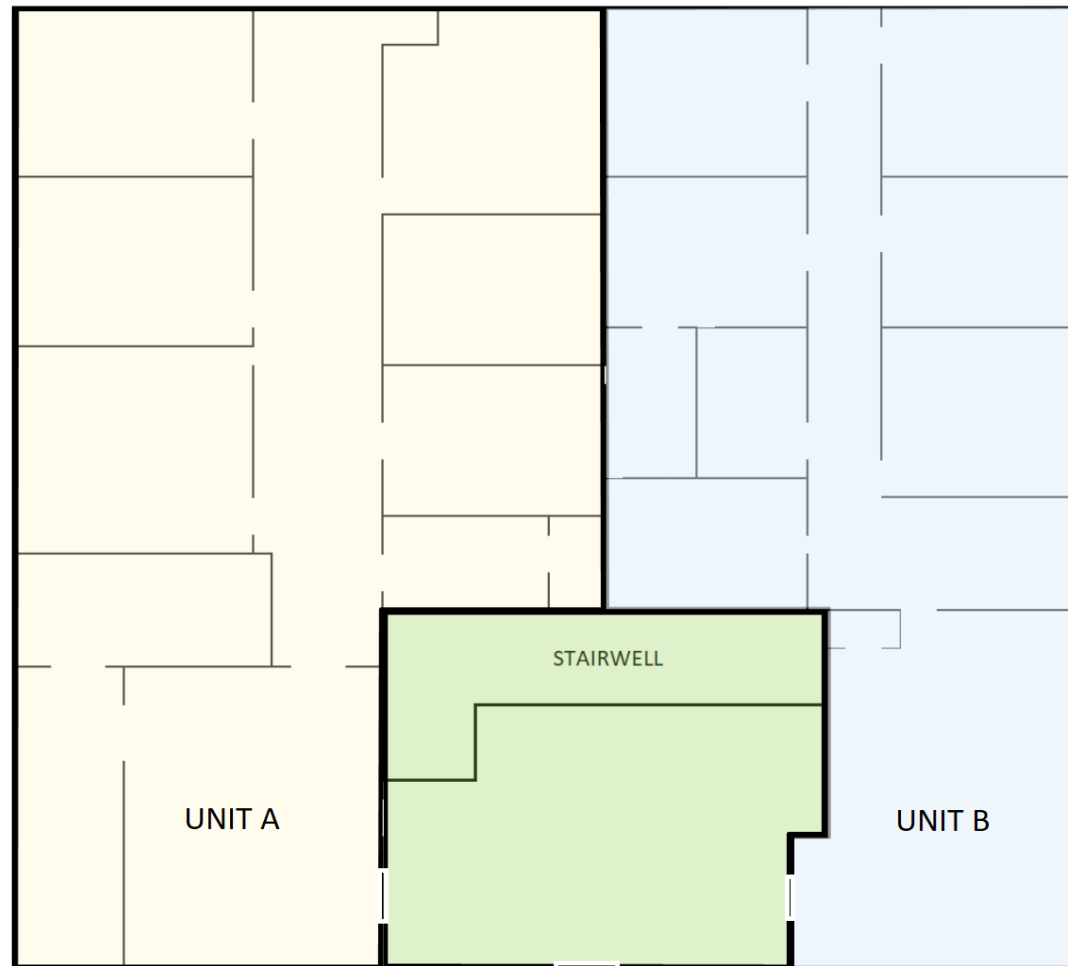


JOE D'AGOSTINO 732.545.1850 X 17 JOE@LANCEBRAM.COM

This information has been secured from sources we believe to be reliable. Accordingly, no warranty or representation, express or implied, is made to the accuracy of the information contained herein, and same submitted to errors, omissions, change of price, rental or other conditions, withdrawal notice, and to any special listing conditions imposed by our principals.

222 Easton Ave
NEW BRUNSWICK, NJ 08901

Lance Bram
COMMERCIAL BROKERAGE
www.lancebram.com



JOE D'AGOSTINO 732.545.1850 X 17 JOE@LANCEBRAM.COM

This information has been secured from sources we believe to be reliable. Accordingly, no warranty or representation, express or implied, is made to the accuracy of the information contained herein, and same submitted to errors, omissions, change of price, rental or other conditions, withdrawal notice, and to any special listing conditions imposed by our principals.