

190 Route 18

East Brunswick, NJ 08816

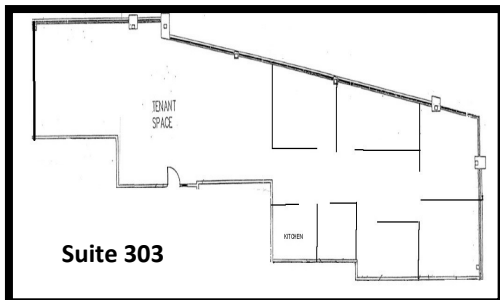
Available for Lease

2 Suites

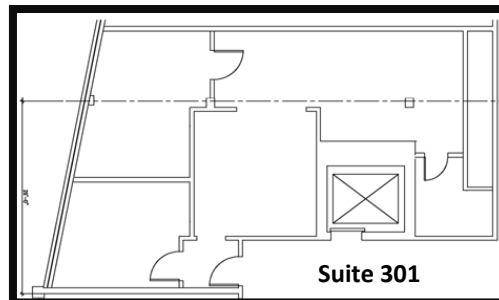


PROPERTY HIGHLIGHTS

- ◆ Modern Brick & Class A Office Building
- ◆ Amazing Window Line and View
- ◆ Abundant Amount of Natural Lighting
- ◆ Janitorial Services Included
- ◆ Individually Metered Heat & Electric
- ◆ Ample and Covered Parking
- ◆ Ideal for Professional or Medical Use
- ◆ Frontage on Route 18
- ◆ Corner Lot with Access to Route 18 North & South
- ◆ Just South of Exit 9 of the NJTP
- ◆ Near Route 1/Route 18 Intersection
- ◆ Great Signage Exposure
- ◆ Daily Traffic Count: 85,000 +



- ◆ +/- 3,300 SF
- ◆ Third Floor, Suite 303
- ◆ Divisible to +/- 1,000 SF
- ◆ Rental Rate: \$18.95 PSF MGross
- ◆ 6 Private Offices & a Kitchenette



- ◆ +/- 1,000 SF
- ◆ Third Floor, Suite 301
- ◆ Rental Rate: \$18.95 PSF MGross
- ◆ 2 Private Offices

FOR MORE INFORMATION CONTACT EXCLUSIVE BROKERS:

Lance Bram

COMMERCIAL BROKERAGE

www.lancebram.com

PHONE: 732.545.1850, EXT 11 LANCE SHALIT

This information has been secured from sources we believe to be reliable. Accordingly, no warranty or representation, express or implied, is made to the accuracy of the information contained herein, and same submitted to errors, omissions, change of price, rental or other conditions, withdrawal notice, and to any special listing conditions imposed by our principals.