

555 Route 18
East Brunswick, NJ 08816

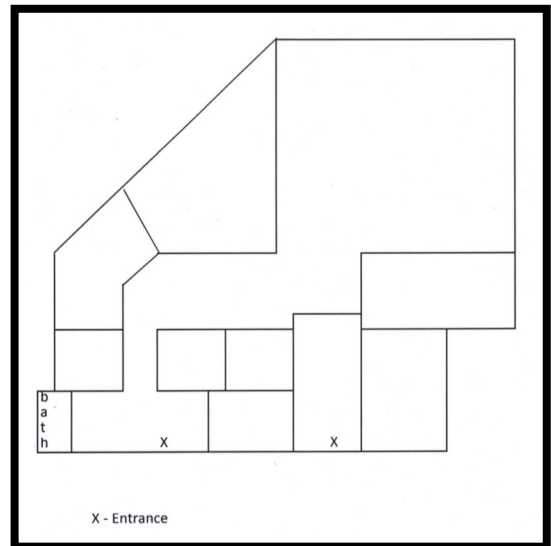


Available for Lease

Property Highlights

Asking Rent: \$16.00/SF NNN

- ◆ 2,692 SF Office
- ◆ 2nd Floor with Elevator Access
- ◆ 8 Large Private Offices/Exam Rooms
- ◆ Reception Area
- ◆ Large Bullpen Area, 28' x 27'
- ◆ Private Bathroom
- ◆ Abundant Amount of Natural Lightening
- ◆ Route 18 Signage
- ◆ Accessible via Summerhill Road or Southbound Route 18
- ◆ Easy Access to Route 18 North



FOR MORE INFORMATION CONTACT EXCLUSIVE BROKERS:

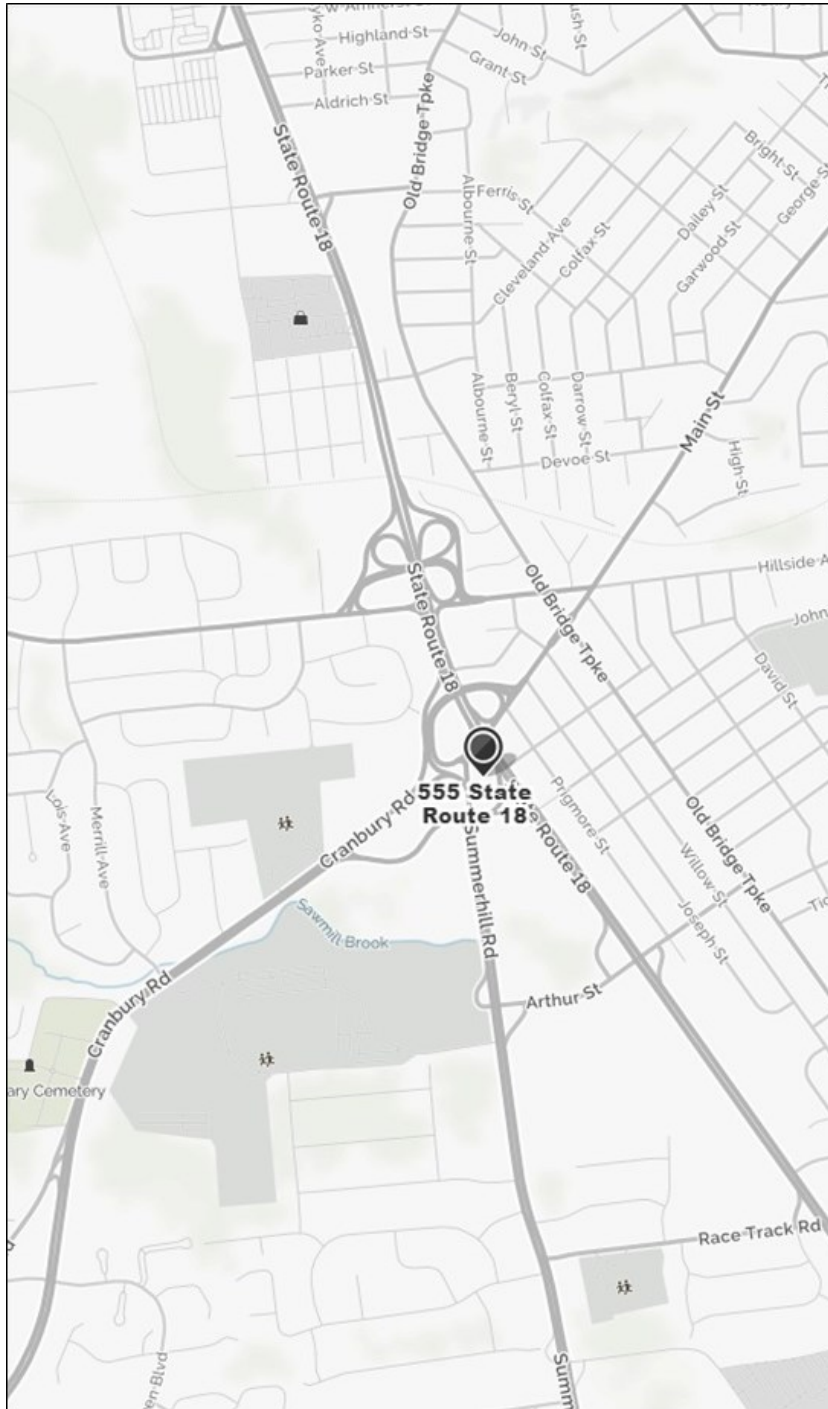
Lance Bram
COMMERCIAL BROKERAGE
www.lancebram.com

Christine Soccodato
Office: 732.545.1850 Ext 32
Cell: 732.742.2554
christine@lancebram.com

Joseph D'Agostino
Office: 732.545.1850 Ext 17
Cell: 732.690.6339
joe@lancebram.com

This information has been secured from sources we believe to be reliable. Accordingly, no warranty or representation, express or implied, is made to the accuracy of the information contained herein, and same submitted to errors, omissions, change of price, rental or other conditions, withdrawal notice, and to any special listing conditions imposed by our principals.

555 Route 18 East Brunswick, NJ 08816



FOR MORE INFORMATION CONTACT EXCLUSIVE BROKERS:

Lance Bram
COMMERCIAL BROKERAGE
www.lancebram.com

Christine Soccodato
Office: 732.545.1850 Ext 32
Cell: 732.742.2554
christine@lancebram.com

Joseph D'Agostino
Office: 732.545.1850 Ext 17
Cell: 732.690.6339
joe@lancebram.com

This information has been secured from sources we believe to be reliable. Accordingly, no warranty or representation, express or implied, is made to the accuracy of the information contained herein, and same submitted to errors, omissions, change of price, rental or other conditions, withdrawal notice, and to any special listing conditions imposed by our principals.