

666 Plainsboro Road  
Building 100, Suite 1H  
Plainsboro, NJ 08536



Available for Sale/Lease  
1,400 SF  
Medical Office Condo

**Sale Price: \$350,000 \***

\* includes furniture, fixtures and some equipment

**Asking Rent: \$15/SF NNN plus CAM and Taxes**

*Lance Bram*  
COMMERCIAL BROKERAGE

## Property Highlights

- ◆ Established Turn-Key Medical Office Condo
- ◆ Ground Floor
- ◆ Three Examination Rooms, One Consultation Room
- ◆ One Private Office, One Lab Room
- ◆ One Storage Room
- ◆ Completely Renovated One Year Ago
- ◆ ◆ ◆
- ◆ Located in a Park-Like Setting
- ◆ Nearby Princeton Meadows Shopping Center
- ◆ Walk to Restaurants
- ◆ Easy Access to NE Corridor Rail, Routes 1, 130 and the NJ Turnpike

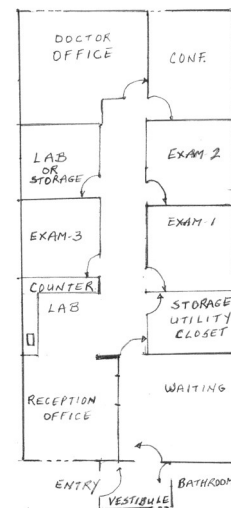
For more information contact:

[Anu Motiwala](#)

Phone: 732.545.1850, Ext. 30

Cell: 732.236.4309

[anu.motiwala@lancebram.com](mailto:anu.motiwala@lancebram.com)



This information has been secured from sources we believe to be reliable. Accordingly, no warranty or representation, express or implied, is made to the accuracy of the information contained herein, and same submitted to errors, omissions, change of price, rental or other conditions, withdrawal notice, and to any special listing conditions imposed by our principals.

28 Kennedy Boulevard \* Suite 800 \* East Brunswick NJ 08816 \* 732.545.1850 phone \* [www.lancebram.com](http://www.lancebram.com)